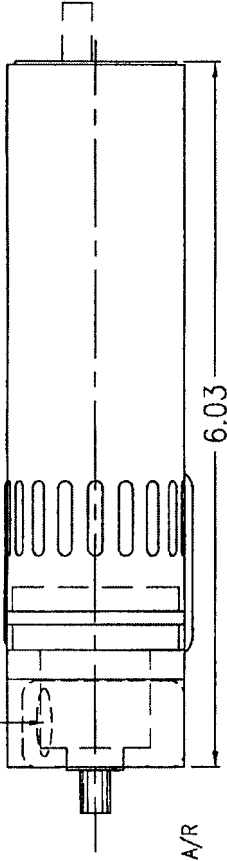


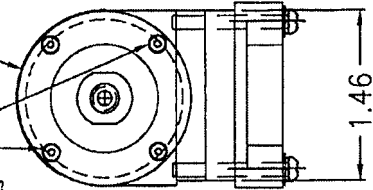
REVISIONS			
REV	DESCRIPTION	DCR #	DATE
AA	RELEASE, WAS REV 06	01-0047	7/16/01
AB	RELOCATED LABELING	TBA	8/23/01
AC	NOTE 4 LOCITITE HEAD SCREWS	TBA	12/17/01

LOCATE S/N WARNING LABEL AS SHOWN, WITH "DANGER" VISIBLE THIS END



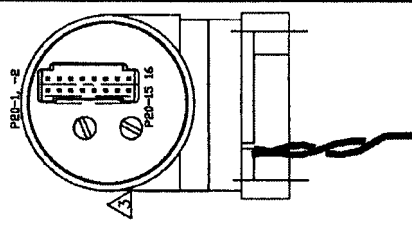
4 HEAD-SCREWS (4 EA) IF LOOSE, ADD LOCITITE 222 A/R

KEEP PROTECTIVE DUST-CAP ON UNTIL INSTALLATION



NOTES:
 1. Make from PTH* LASER ASSY P/N 101C (PTI Outline drawing 0-0334-0100-0C.dwg) with High Current Option, INTERNAL R6850 filter, and SU-CW-9MM-C1-980-0.3M-R 300mW CW laser diode, 980±5nm, 500mA Maximum operating current, 9MM package, Internal thermistor-controlled Temperature regulation to hold setpoint (25-28C) within ±0.2C, in an Operating environment of 5-40C.
 2. PTH* TO SUPPLY FAN LOOSE: Orasure will cut, FAN CABLE wires to 5.0" long, strip ends and crimp per manufacturers crimp & cooling requirements.
 3. PTH* BACKPLATE, PER SHEET #2 FOR POLARIZED CONNECTORS REF: Orasure will supply LASER POWER HARNESS
 4. CHECK LASER ASSEMBLY FOR LOOSE HEAD-SCREWS; IF ANY LOOSE SCREWS FOUND, REMOVE, AND ADD 3001-0094 LOCITITE 222 TO THE TIP OF THE SCREW, AND RE-INSTALL.

*VENDOR:
 Power Technology, Inc.
 Shipping Address:
 16302 Alexander Road (Rt 111) PO Box 191117
 Alexander AR 72002 Little Rock AR 72219-1117
 501-407-0712 x (501) 407-0036 FAX
 Email: waburgess@powertechtechnology.com
 www.powertechtechnology.com



PIN #	FUNCTION
J20-1	12 VDC SUPPLY
J20-2	12 VDC SUPPLY
J20-4	V-REF (for TEMP)
J20-7	LASER CURRENT MONITOR
J20-9	L DIODE TEMPERATURE (to REF)
J20-11	LASER TEMP ERR
J20-13	5 VDC LASER SUPPLY
J20-14	MONITOR GND RETURN
J20-15	POWER GND RETURN
J20-16	POWER GND RETURN

TOLERANCES UNLESS OTHERWISE NOTED	APPROVALS	DATE
.XXX = ±.005" (1.3mm) .XX = ±.01" (0.25mm) 0.X = ±.02" (0.5mm) FRACTIONAL ± 1/16 ANGLES ± 1/2°	APPROVALS	DATE

DESIGNER	DATE
P.A. Bourdelle	12/17/03

REV	DATE
AC	12/17/01
B	8/23/01
AA	7/16/01

TITLE LASER MODULE 980nm

SIZE	SCALE	REV
B	3001-0191-20	AC

FUNCTION	CAGE	COLOR
P21-2	26 AWG	BLACK
P21-1	26 AWG	RED

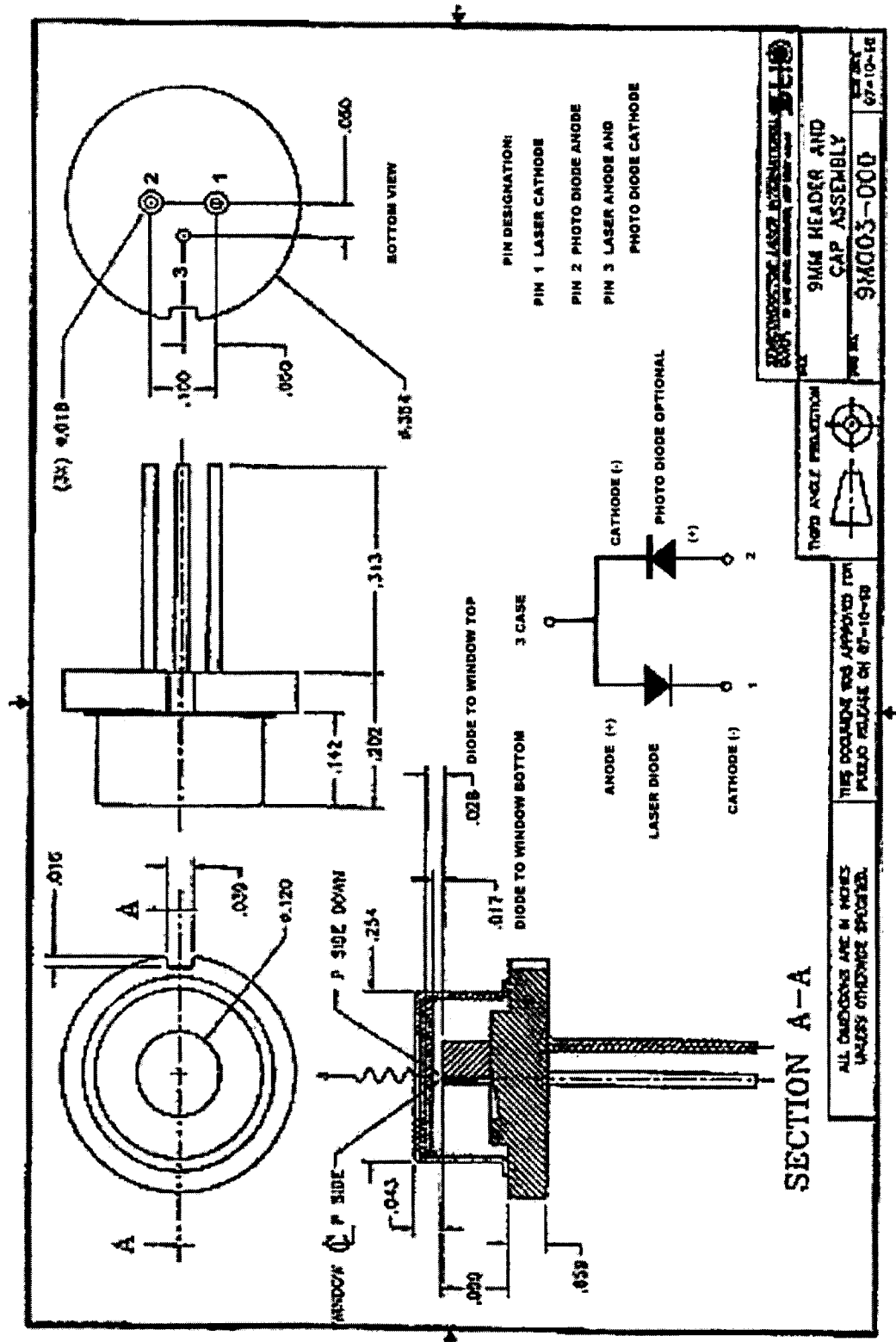
WIRE #	FUNCTION	CAGE	COLOR
P21-2	GROUND	26 AWG	BLACK
P21-1	12VDC FAN POWER	26 AWG	RED

See Notes	See Notes
See Notes	See Notes

SCALE	FILE NAME	SHEET	OF
3001-0191-20-AC.dwg	1	1	3

SPECIFICATION DOCUMENT

Title: DIODE, LASER, 980Nm, 300mW, 9mm Can



SECTION A-A

ALL DIMENSIONS ARE IN INCHES UNLESS OTHERWISE SPECIFIED.

THIS DOCUMENT WAS APPROVED FOR PUBLISHER RELEASE ON 07-10-19

THIS ANGLE PRESENTATION



SPINNING LASER INTERNATIONAL
 9MM HEADER AND CAP ASSEMBLY
 PART NO. 9M003-000
 DATE 07-10-19